



PART NO.	DESCRIPTION		
0001-83	17" RIDE	HT-230	
0001-84	14-15" RIDE	HT-230	
0001-85	17" RIDE	HT-250	
0001-86	17" RIDE	HT-300	
0001-87	AA 230 INTRAX		
0001-88	AA-250 INTRAX		
0001-89	UNDERSLUNG	AA-250 INTRAX	
0001-90	AA-300 INTRAX		
0001-91	DOWN	AAL-300 INTRAX	
0001-92	UP	U B L LIFT	
0001-93	UP	PARALIFT	
0001-94	DOWN	PARALIFT	
0001-95	21-74 B	LEAF SPRING	
0001-96	RIDELITE		
0001-97	RIDEWELL 240		
0001-98	WATSON TA-300		
0001-99	LARGE	WATSON STEERABLE	
0001-100	SMALL	WATSON STEERABLE	
0001-101	T-17		
0001-102	T-18		
0001-103	UP	CL-100-101	
0001-104	UP	CL-105-107	
0001-105	UP	H L R	
0001-106	RIDE	H L R	

PART NO.	DESCRIPTION		
0001-107	14-15" RIDE	HT-230	
0001-108	14-15" RIDE	HT-230	
0001-109	17" RIDE	HT-230	
0001-110	17" RIDE	HT-230	
0001-111	17" RIDE	HT-250	
0001-112	17" RIDE	HT-250	
0001-113	17" RIDE	HT-300	
0001-114	17" RIDE	HT-300	
0001-115	INTRAX 230-250		
0001-116	INTRAX 230-250		
0001-117	RIDELITE		
0001-118	RIDEWELL 240		
0001-119	WATSON TA-300		
0001-120	WATSON TA-300		



PART NO.	DESCRIPTION
0001-121	HT-230
0001-122	HT-250
0001-123	HT-300
0001-124	INTRAX 230-250
0001-125	RIDELITE
0001-126	RIDEWELL 240
0001-127	WATSON TA-300
0001-128	WATSON STEERABLE



PART NO.	DESCRIPTION	
0001-129	HT-230	
0001-130	HT-250	
0001-131	HT-300	
0001-132	INTRAX 230-250	
0001-133	WATSON TA-300	
0001-134	SHOCK STRAP	HT-300
0001-135	SHOCK STRAP	INTRAX 230-250



PART NO.	DESCRIPTION	
0001-67	WELD ALIGN	T-17
0001-68	WELD ALIGN	T-17
0001-69	QUICK ALIGN	HT-230
0001-70	QUICK ALIGN	HT-230
0001-71	WELD ALIGN	HT-250
0001-72	WELD ALIGN	HT-250
0001-73	QUICK ALIGN	HY-250
0001-74	QUICK ALIGN	HT-250
0001-75	QUICK ALIGN	HT-300
0001-76	QUICK ALIGN	HT-300
0001-77	RIDELITE	
0001-78	RIDELITE	
0001-79	RIDEWELL 240	
0001-80	RIDEWELL 240	
0001-81	WATSON TA-300	
0001-82	WATSON TA-300	

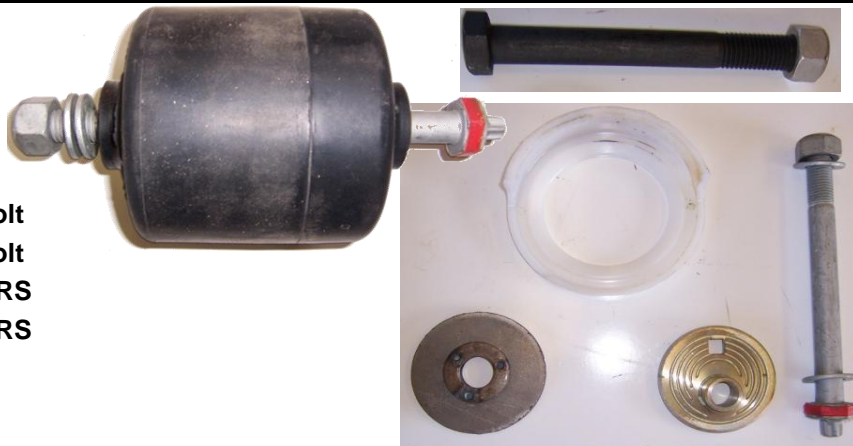




PART NO.	DESCRIPTION	
0001-48	15" QUICK ALIGN	HT-230 BOLT ON
0001-49	15" QUICK ALIGN	HT-230 BOLT ON
0001-50	17" WELD ALIGN	HT-300 BOLT ON
0001-51	17" WELD ALIGN	HT-300 BOLT ON
0001-52	17" QUICK ALIGN	HT-300 BOLT ON
0001-53	17" QUICK ALIGN	HT-300 BOLT ON
0001-54	17" QUICK ALIGN	HT-300 WELD ON
0001-55	17" QUICK ALIGN	HT-300 WELD ON
0001-56	10" WELD ON	INTRAX 230-250
0001-57	10" WELD ON	INTRAX 230-250
0001-58	RIDELITE	
0001-59	RIDELITE	
0001-60	RIDEWELL 240	
0001-61	RIDEWELL 240	
0001-62	WATSON	
0001-63	WATSON	
0001-64	T17-214	T-17
0001-65		T-17
0001-66	T17-406	T-17



PART NO.	DESCRIPTION	
0001-136	WELD ALIGN	T-17
0001-137	WELD ALIGN	HT-230
0001-138	WELD ALIGN	HT-250
0001-139	WELD ALIGN	HT-300
0001-140	QUICK ALIGN	HT-300
0001-141	WELD ALIGN	pivot bolt
0001-142	QUICK ALIGN	pivot bolt
0001-143	WELD ALIGN	COLLARS
0001-144	QUICK ALIGN	COLLARS
0001-145	WEAR PADS	
0001-146	3" STEEL CHANNEL	



PART NO.	DESCRIPTION	
0001-147	HT-230	
0001-148	HT-250	
0001-149	HT-300	
0001-150	WATSON TA-300	
0001-192	7/8 HIGH NUTS	
0001-193	7/8 WASHERS	
0001-151	DUST COVERS	





PART NO. DESCRIPTION

- 0001-152 GRAINING AIR BOX
- 0001-153 HENDRICKSON AIR BOX
- 0001-154 HENDRICKSON AIR BOX W/ VALVES



PART NO. DESCRIPTION

- 0001-155 30/30
- 0001-156 30



PART NO. DESCRIPTION

- 0001-159 haldex
- 0001-160 BENDIX



PART NO. DESCRIPTION

- 0001-161 TP
- 0001-162 TP race
- 0001-163 TQ
- 0001-164 TQ
- 0001-165 TQ race



PART NO. DESCRIPTION

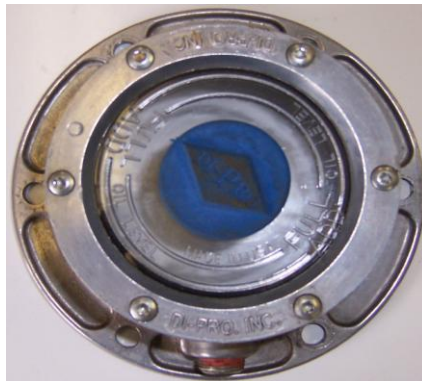
- 0001-166 TP
- 0001-167 TQ
- 0001-168 TP
- 0001-169 TQ





PART NO. DESCRIPTION

- 0001-170 TP screw on
- 0001-171 TP bolt on
- 0001-172 TQscrew on
- 0001-173 TQ bolt on
- 0001-174 CAP PLUGS



PART NO. DESCRIPTION

- 0001-175 WALTHER
- 0001-176 CAST
- 0001-177 CENTERFUSED
- 0001-178 DURALITE



PART NO. DESCRIPTION

- 0001-181 71.5 TP ABS 5/8 WALL
- 0001-182 77.5 TP ABS 5/8 WALL
- 0001-183 77.5 MOUNTAIN BRAKE
- 0001-184 71.5 TQ ABS 5/8 WALL
- 0001-185 77.5 TQ ABS 5/8 WALL
- 0001-186 CAM BUSHING KIT
- 0001-187 S CAMS
- 0001-188 SHOES
- 0001-189 CAM SAVERS
- 0001-190 49" SPRINGS
- 0001-191 44" SPRINGS



PART NO. DESCRIPTION

- 0001-194 single port
- 0001-195 rubber mounts





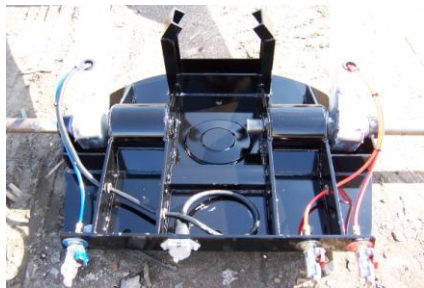
PART NO. DESCRIPTION

- 0001-196 TIRE CARRIER
- 0001-198 SLIP DISC
- 0001-199 BOLT ON GREASE PLATE



PART NO. 5TH WHEEL PLATES

- 0001-200 FRAMLESS ASSEMBLED
- 0001-201 FRAME ASSEMBLED
- 0001-202 TS 100 KING PIN STOP



PART NO. DRAFT ARMS

- 0001-203 STEEL DRAFT ARMS
- 0001-204 ALUM DRAFT ARMS
- 0001-205 STEEL SUPPORT PLATE
- 0001-206 ALUM SUPPORT PLATES



PART NO. REAR HINGE

- 0001-207 DUMP SHOES
- 0001-208 WASHERS
- 0001-209 PINTLE HOOK
- 0001-210 DRAW BAR EYE
- 0001-211 GERMAN TURN TABLE

